



RICH/  
MIX

**HIRE US**

**UNIQUE EVENT SPACES  
AND BOUTIQUE SCREENS**

---

EAST LONDON'S INDEPENDENT ARTS CENTRE



## ABOUT US

Located at 35-47 Bethnal Green Road in the heart of Shoreditch, the building that houses Rich Mix was once a vast garment factory.

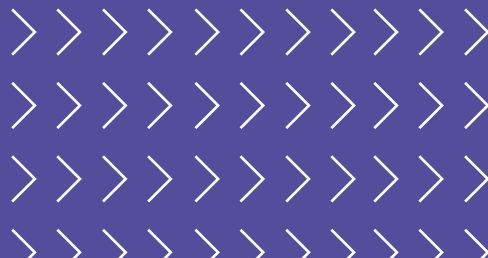
These days, you'll find a working cinema, theatre, live music venue and creative hub where the citizens of east London and beyond can come together to experience and make world class art.

As a charity, all our venue hire profits serve our core purpose; supporting new and emerging talent, our work with local communities and young people.

## PRIVATE HIRES

We offer a range of flexible and creative spaces and services at competitive rates – explore this brochure and be inspired.

Please see page 10 for our standard rates or contact our Private Hires Team for bespoke quotations.





# INDOORS

## THE STUDIO (VENUE 1)

A flexible theatre space, fully equipped with lighting rig, retractable seating, Wi-Fi capabilities and air conditioning. Plus, this space can be naturally lit.

**Size:** 220m<sup>2</sup>

**Capacities:** Standing 350 / Theatre Style 150 / Cabaret Style 100

**Perfect for:** Conferences / Parties / Exhibitions / Award Ceremonies



## THE MIX (VENUE 2)

A modern, blank canvas designed with flexibility in mind - dress the space as you wish.

Features an in-built private bar which makes for a convenient break-out area or catering space. Plus, sound-proof doors, black-out blinds, Wi-Fi capabilities and air conditioning.

**Size:** 200m<sup>2</sup>

**Capacities:** Standing 200 / Theatre Style 100 / Cabaret Style 80

**Perfect for:** Exhibitions / Product Launches / Filming / Award Ceremonies / Breakfast Meetings / Parties

**COLLABORATE WITH US ON CREATING YOUR EVENT.**

[EVENTS@RICHMIX.ORG.UK](mailto:EVENTS@RICHMIX.ORG.UK)

020 7613 7495



## **THE STAGE (MAIN SPACE)**

Our dynamic main performance space, overlooked by the Mezzanine Gallery. The space includes a private bar, large stage, technical booth, lighting rig and projection facilities.

**Size:** 286m<sup>2</sup>

**Capacity:** Standing 375 / Theatre Style 200 / Cabaret Style 120

**Perfect for:** Conferences / Performances



A modern gallery space with white walls and a dark floor. Several framed artworks are displayed on the walls. Two tall, thin wooden pedestals hold more art. Track lighting is mounted on the ceiling, and a large window or glass partition is visible on the right side.

## MEZZANINE GALLERY

An informal creative space, suited to hosting receptions in conjunction with a cinema screen hire, or perfectly situated as a break-out area when hiring the Main Space.

**Size:** 186m<sup>2</sup>

**Capacity (standing):** 150

**Perfect for:** Informal Meetings / Networking Events / Drinks Receptions



A bright boardroom with a long white table and black chairs. Large windows on the left side provide natural light. A whiteboard is mounted on the wall, and a projector is visible on the ceiling.

## BOARDROOM

Hire our Boardroom meeting space at a competitive hourly rate. The room benefits from plenty of natural light and is equipped with whiteboard and projector. Flipcharts also available for hire. Meetings can be catered, from refreshments to lunches.

**Size:** 26m<sup>2</sup>

**Capacity (seated):** 20 (16 around the board table)

**Perfect for:** Meetings / Break-outs / Away-days

**COLLABORATE WITH US ON CREATING YOUR EVENT.**

EVENTS@RICHMIX.ORG.UK

020 7613 7495

# CINEMA SCREENS

We have a working three screen cinema showing a mix of the latest independent and blockbuster films, as well as hosting some of the world's best film festivals.

Each screen presents a unique boutique design, making us one of the most attractive cinemas in London, with Vogue magazine voting us in their top ten.

All three screens are licensed for weddings, boast the latest technology with air-conditioning, and are available to hire for standalone events / screenings or in conjunction with our other spaces.

## SCREEN 1

**Size:** 200m<sup>2</sup>

**Capacity (seated):** 181 (plus 2 accessible bays)

**Perfect for:** Industry Screenings and Premieres / Private Screenings / Film Parties / Film Events / Proposals / Weddings

+ Catering services available





## SCREEN 2

**Size:** 152m<sup>2</sup>

**Capacity (seated):** 132 (plus 2 accessible bays)

**Perfect for:** Industry Screenings and Premieres / Private Screenings / Film Parties / Film Events / Proposals / Weddings



## SCREEN 3

**Size:** 103m<sup>2</sup>

**Capacity (seated):** 59 (plus 2 accessible bays)

**Perfect for:** Industry Screenings and Small Premieres / Private Screenings / Student Screenings / Film Parties / Proposals / Weddings

**COLLABORATE WITH US ON CREATING YOUR EVENT.**

EVENTS@RICHMIX.ORG.UK

020 7613 7495

# OUTDOORS

Spotify

TOM  
MISCH

GEOGRAPHY

RICH MIX  
DISCOVER A WORLD  
OF MUSIC WITH US

RICH MIX





## BACK WALLS

Make a real impact with a statement on our back walls. A flexible space where you can grab the attention of all on east London's Redchurch Street.

## FRONT FAÇADE

Take over the front of our building, right on the bustling Bethnal Green Road, with plenty of options for projections.

**COLLABORATE WITH US ON CREATING YOUR EVENT.**

EVENTS@RICHMIX.ORG.UK

020 7613 7495

# RATES

SPACE	FEE exc. VAT			SIZE	MAX CAPACITY	PAGE REF
	DAY	EVENING	FULL DAY & EVENING			
THE STUDIO (VENUE 1)	£1200	£1450	£2000	220m <sup>2</sup>	350*	3
THE MIX (VENUE 2)	£1100	£1350	£1900	200m <sup>2</sup>	200*	3
THE STUDIO AND THE MIX (combined)	£1800	£2100	£3000	420m <sup>2</sup>	Varies*	3
THE STAGE(MAIN SPACE)	£1200	£1450	£2000	286m <sup>2</sup>	375*	4
MEZZANINE GALLERY	£390	£700	£900	186m <sup>2</sup>	150	5
THE STAGE AND MEZZANINE GALLERY (combined)	£1300	£1700	£2350	472m <sup>2</sup>	Varies*	4 + 5
BOARDROOM	£40 p/h	£40 p/h	£40 p/h	26m <sup>2</sup>	20	5
<b>CINEMAS (per hour)</b>	<b>9am – 3pm</b>	<b>3pm – 8pm</b>	<b>8pm – 12am</b>			
SCREEN 1	£300 p/h	£600 p/h	£900 p/h + min bar spend £1000	200m <sup>2</sup>	181	6
SCREEN 2	£200 p/h	£500 p/h	£700 p/h + min bar spend £700	152m <sup>2</sup>	132	7
SCREEN 3	£150 p/h	£300 p/h	£450 p/h + min bar spend £500	103m <sup>2</sup>	59	7
<b>OUTDOORS</b>	For Back Walls and Front Facade fees, please request a quote.					8 + 9

\* Depending on the room set-up

## PLEASE NOTE

- All Event Support Services are chargeable. Fees based on requirements.
- Standard space hire times:  
**Day:** 9am - 5pm  
**Evening:** 6pm - 12am  
**Day and Evening:** 9am - 12am

# EVENT SUPPORT

Our talented team offer a range of services to help create and facilitate your event.

## MANAGEMENT

An events manager will oversee proceedings from inception to on the day delivery, providing you with one point of contact who has everything in-hand.

## CATERING

Our tried and tested catering suppliers offer a delicious range of food styles to suit all tastes, from casual street-food to high-end cuisine.

## TECHNICAL

We offer full technical support services to include public announcements (PA), audio visual (AV), sound and lighting. Our technicians can be on-hand to service all your event requirements.

### Image credits in order of appearance:

Cinema wall paper © Rich Mix, 2018 /  
Rich Mix features © Craig Gibson, 2018 /  
Rich Mix internal and external spaces © Craig Gibson, 2018 /  
Mezzanine Gallery © Rach Williams, 2017 /  
Tom Misch street art in situ © Spotify, 2018

**COLLABORATE WITH US ON CREATING YOUR EVENT.**

EVENTS@RICHMIX.ORG.UK

020 7613 7495



**WE ARE A CHARITY.  
ALL INCOME SERVES OUR CORE PURPOSE.**

RICH MIX  
35-47 BETHNAL GREEN ROAD  
LONDON E1 6LA

[WWW.RICHMIX.ORG.UK](http://WWW.RICHMIX.ORG.UK)  
[@RICHMIXLONDON](https://twitter.com/RICHMIXLONDON)  
020 7613 7498



Registered Charity: 1089163